

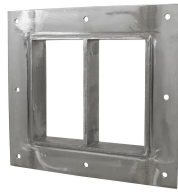
# Roxtec GH frame

The Roxtec GH frame with pre-drilled holes and standard sized flange is bolted to even structures. It makes it possible to maximize the amount of cables/pipes while minimizing the penetration footprint. The rectangular steel frame can be used with a GE extension frame in galvanized steel to cover the depth of a thick wall/floor.

- To be used with corresponding Roxtec components to form a complete sealing solution
- Attachment by bolting to steel or sandwich walls



GH 6x1 GALV



GH 6x2 AISI 316

## Galvanized mild steel

Product	Frame openings	Packing space (mm)	External dimensions WxHxD (mm)	Aperture dimensions WxH (mm)	Weight (kg)	Art. No
GH 2x1 GALV	1	120 x 60	252.5 x 233 x 60	148(+5/-5) x 128(+5/-5)	3.2	5GH0000008110
GH 2x2 GALV	2	120 x 60	383 x 233 x 60	278(+5/-5) x 128(+5/-5)	5.6	5GH00000010019
GH 2x3 GALV	3	120 x 60	513.5 x 233 x 60	409(+5/-5) x 128(+5/-5)	8	107959
GH 2x4 GALV	4	120 x 60	644 x 233 x 60	539(+5/-5) x 128(+5/-5)	9.8	5GH00000010018
GH 2x5 GALV	5	120 x 60	774.5 x 233 x 60	670(+5/-5) x 128(+5/-5)	11.8	5GH00000010017
GH 2x6 GALV	6	120 x 60	905 x 233 x 60	800(+5/-5) x 128(+5/-5)	14	114880
GH 2+2x1 GALV	2	120 x 60	252.5 x 344 x 60	148(+5/-5) x 241(+5/-5)	5.5	114890
GH 2+2x2 GALV	4	120 x 60	383 x 346 x 60	278(+5/-5) x 241(+5/-5)	9	114891
GH 2+2x3 GALV	6	120 x 60	513.5 x 346 x 60	409(+5/-5) x 241(+5/-5)	12.6	114892
GH 2+2x4 GALV	8	120 x 60	644 x 346 x 60	539(+5/-5) x 241(+5/-5)	16	114893
GH 2+2x5 GALV	10	120 x 60	774.5 x 346 x 60	670(+5/-5) x 241(+5/-5)	24	114894
GH 2+2x6 GALV	12	120 x 60	905 x 346 x 60	800(+5/-5) x 241(+5/-5)	21.2	114895
GH 4x1 GALV	1	120 x 120	252.5 x 291.5 x 60	148(+5/-5) x 187(+5/-5)	4	5GH0000008119
GH 4x2 GALV	2	120 x 120	383 x 291.5 x 60	278(+5/-5) x 187(+5/-5)	6.6	5GH0000008170
GH 4x3 GALV	3	120 x 120	513.5 x 291.5 x 60	409(+5/-5) x 187(+5/-5)	9	5GH0000008520
GH 4x4 GALV	4	120 x 120	644 x 291.5 x 60	539(+5/-5) x 187(+5/-5)	11.5	5GH0000008021
GH 4x5 GALV	5	120 x 120	774.5 x 291.5 x 60	670(+5/-5) x 187(+5/-5)	13.8	106231

Product	Frame openings	Packing space (mm)	External dimensions WxHxD (mm)	Aperture dimensions WxH (mm)	Weight (kg)	Art. No
GH 4x6 GALV	6	120 x 120	905 x 291.5 x 60	800(+5/-5) x 187(+5/-5)	15.5	110385
GH 4+4x1 GALV	2	120 x 120	252.5 x 461 x 60	148(+5/-5) x 358(+5/-5)	7.1	5GH0000009866
GH 4+4x2 GALV	4	120 x 120	383 x 463 x 60	278(+5/-5) x 358(+5/-5)	11.2	5GH0000009119
GH 4+4x3 GALV	6	120 x 120	514 x 463 x 60	409(+5/-5) x 358(+5/-5)	14.9	103543
GH 4+4x4 GALV	8	120 x 120	644 x 463 x 60	539(+5/-5) x 358(+5/-5)	18.6	5GH0000013818
GH 4+4x5 GALV	10	120 x 120	774.5 x 463 x 60	670(+5/-5) x 358(+5/-5)	25	104530
GH 4+4x6 GALV	12	120 x 120	905 x 463 x 60	800(+5/-5) x 358(+5/-5)	27	114934
GH 6x1 GALV	1	120 x 180	252.5 x 350 x 60	148(+5/-5) x 245(+5/-5)	4.4	5GH0000007882
GH 6x2 GALV	2	120 x 180	383 x 350 x 60	278(+5/-5) x 245(+5/-5)	7.5	5GH0000007828
GH 6x3 GALV	3	120 x 180	513.5 x 350 x 60	409(+5/-5) x 245(+5/-5)	10.4	5GH0000008108
GH 6x4 GALV	4	120 x 180	644 x 350 x 60	539(+5/-5) x 245(+5/-5)	13	5GH0000008086
GH 6x5 GALV	5	120 x 180	774.5 x 350 x 60	670(+5/-5) x 245(+5/-5)	15.8	5GH0000008232
GH 6x6 GALV	6	120 x 180	905 x 350 x 60	800(+5/-5) x 245(+5/-5)	18.4	5GH0000008103
GH 6x7 GALV	7	120 x 180	1035.5 x 350 x 60	931(+5/-5) x 245(+5/-5)	21.2	5GH0000008169
GH 6+6x1 GALV	2	120 x 180	252.5 x 578 x 60	148(+5/-5) x 475(+5/-5)	8.5	5GH0000008102
GH 6+6x2 GALV	4	120 x 180	383 x 580 x 60	278(+5/-5) x 475(+5/-5)	12	5GH0000008104
GH 6+6x3 GALV	6	120 x 180	513.5 x 580 x 60	409(+5/-5) x 475(+5/-5)	15.7	5GH0000008109
GH 6+6x4 GALV	8	120 x 180	644 x 580 x 60	539(+5/-5) x 475(+5/-5)	22	5GH0000008105
GH 6+6x5 GALV	10	120 x 180	774.5 x 580 x 60	670(+5/-5) x 475(+5/-5)	30.5	5GH0000008123
GH 6+6x6 GALV	12	120 x 180	905 x 580 x 60	800(+5/-5) x 475(+5/-5)	31	5GH0000010485
GH 8x1 GALV	1	120 x 240	252.5 x 410 x 60	148(+5/-5) x 305(+5/-5)	5.2	GH08000002115
GH 8x2 GALV	2	120 x 240	383 x 410 x 60	278(+5/-5) x 305(+5/-5)	8.7	5GH0000008907
GH 8x3 GALV	3	120 x 240	513.5 x 410 x 60	409(+5/-5) x 305(+5/-5)	11.7	5GH0000008470
GH 8x4 GALV	4	120 x 240	644 x 410 x 60	539(+5/-5) x 305(+5/-5)	14.8	5GH0000008107
GH 8x5 GALV	5	120 x 240	774.5 x 410 x 60	670(+5/-5) x 305(+5/-5)	17.8	5GH0000009784
GH 8x6 GALV	6	120 x 240	905 x 410 x 60	800(+5/-5) x 305(+5/-5)	18.5	5GH0000008001
GH 8+8x1 GALV	2	120 x 240	252.5 x 698 x 60	148(+5/-5) x 595(+5/-5)	9.8	5GH0000009297
GH 8+8x2 GALV	4	120 x 240	383 x 700 x 60	278(+5/-5) x 595(+5/-5)	15	5GH0000008871
GH 8+8x3 GALV	6	120 x 240	513.5 x 700 x 60	409(+5/-5) x 595(+5/-5)	20	5GH0000010269

Product	Frame openings	Packing space (mm)	External dimensions WxHxD (mm)	Aperture dimensions WxH (mm)	Weight (kg)	Art. No
GH 8+8x4 GALV	8	120 x 240	644 x 700 x 60	539(+5/-5) x 595(+5/-5)	25	114988
GH 8+8x5 GALV	10	120 x 240	774.5 x 700 x 60	670(+5/-5) x 595(+5/-5)	29.9	5GH0000013719
GH 8+8x6 GALV	12	120 x 240	905 x 700 x 60	800(+5/-5) x 595(+5/-5)	34.6	114989

## Stainless steel

Product	Frame openings	Packing space (mm)	External dimensions WxHxD (mm)	Aperture dimensions WxH (mm)	Weight (kg)	Art. No
GH 2x1 AISI316	1	120 x 60	252.5 x 233 x 60	148(+5/-5) x 128(+5/-5)	3	5GH0000008472
GH 2x2 AISI316	2	120 x 60	383 x 233 x 60	278(+5/-5) x 128(+5/-5)	5.5	115008
GH 2x3 AISI316	3	120 x 60	513.5 x 233 x 60	409(+5/-5) x 128(+5/-5)	7.5	5GH0000009290
GH 2x4 AISI316	4	120 x 60	644 x 233 x 60	539(+5/-5) x 128(+5/-5)	9.4	5GH0000009293
GH 2x5 AISI316	5	120 x 60	774.5 x 233 x 60	670(+5/-5) x 128(+5/-5)	12	108709
GH 2x6 AISI316	6	120 x 60	905 x 233 x 60	800(+5/-5) x 128(+5/-5)	13.3	115009
GH 2+2x1 AISI316	2	120 x 60	252.5 x 344 x 60	148(+5/-5) x 241(+5/-5)	5.5	115019
GH 2+2x2 AISI316	4	120 x 60	383 x 346 x 60	278(+5/-5) x 241(+5/-5)	8.6	115020
GH 2+2x3 AISI316	6	120 x 60	513.5 x 346 x 60	409(+5/-5) x 241(+5/-5)	12	115021
GH 2+2x4 AISI316	8	120 x 60	644 x 346 x 60	539(+5/-5) x 241(+5/-5)	15	115022
GH 2+2x5 AISI316	10	120 x 60	774.5 x 346 x 60	670(+5/-5) x 241(+5/-5)	18	115023
GH 2+2x6 AISI316	12	120 x 60	905 x 346 x 60	800(+5/-5) x 241(+5/-5)	21.2	115024
GH 4x1 AISI316	1	120 x 120	252.5 x 291.5 x 60	148(+5/-5) x 187(+5/-5)	4.1	5GH0000008351
GH 4x2 AISI316	2	120 x 120	383 x 291.5 x 60	278(+5/-5) x 187(+5/-5)	6.4	5GH0000009761
GH 4x3 AISI316	3	120 x 120	513.5 x 291.5 x 60	409(+5/-5) x 187(+5/-5)	8.7	5GH0000012961
GH 4x4 AISI316	4	120 x 120	644 x 291.5 x 60	539(+5/-5) x 187(+5/-5)	10.8	5GH0000009291
GH 4x5 AISI316	5	120 x 120	774.5 x 291.5 x 60	670(+5/-5) x 187(+5/-5)	13.2	5GH0000012899
GH 4x6 AISI316	6	120 x 120	905 x 291.5 x 60	800(+5/-5) x 187(+5/-5)	15.7	105948
GH 4+4x1 AISI316	2	120 x 120	252.5 x 461 x 60	148(+5/-5) x 358(+5/-5)	7	115063
GH 4+4x2 AISI316	4	120 x 120	383 x 463 x 60	278(+5/-5) x 358(+5/-5)	10.4	115064
GH 4+4x3 AISI316	6	120 x 120	513.5 x 463 x 60	409(+5/-5) x 358(+5/-5)	33	5GH0000011312
GH 4+4x4 AISI316	8	120 x 120	644 x 463 x 60	539(+5/-5) x 358(+5/-5)	18	5GH0000009289
GH 4+4x5 AISI316	10	120 x 120	774.5 x 463 x 60	670(+5/-5) x 358(+5/-5)	22	115065

Product	Frame openings	Packing space (mm)	External dimensions WxHxD (mm)	Aperture dimensions WxH (mm)	Weight (kg)	Art. No
GH 4+4x6 AISI316	12	120 x 120	905 x 463 x 60	800(+5/-5) x 358(+5/-5)	25.8	115066
GH 6x1 AISI316	1	120 x 180	252.5 x 350 x 60	148(+5/-5) x 245(+5/-5)	4.9	5GH0000008261
GH 6x2 AISI316	2	120 x 180	383 x 350 x 60	278(+5/-5) x 245(+5/-5)	7.3	5GH0000008179
GH 6x3 AISI316	3	120 x 180	513.5 x 350 x 60	409(+5/-5) x 245(+5/-5)	9.9	5GH0000009292
GH 6x4 AISI316	4	120 x 180	644 x 350 x 60	539(+5/-5) x 245(+5/-5)	12.6	5GH0000007904
GH 6x5 AISI316	5	120 x 180	774.5 x 350 x 60	670(+5/-5) x 245(+5/-5)	15.3	5GH0000008176
GH 6x6 AISI316	6	120 x 180	905 x 350 x 60	800(+5/-5) x 245(+5/-5)	18.2	115095
GH 6+6x1 AISI316	2	120 x 180	252.5 x 578 x 60	148(+5/-5) x 475(+5/-5)	8.1	5GH0000011313
GH 6+6x2 AISI316	4	120 x 180	383 x 580 x 60	278(+5/-5) x 475(+5/-5)	12.7	5GH0000013151
GH 6+6x3 AISI316	6	120 x 180	513.5 x 580 x 60	409(+5/-5) x 475(+5/-5)	16.5	5GH0000009048
GH 6+6x4 AISI316	8	120 x 180	644 x 580 x 60	539(+5/-5) x 475(+5/-5)	21	115105
GH 6+6x5 AISI316	10	120 x 180	774.5 x 580 x 60	670(+5/-5) x 475(+5/-5)	26.5	5GH0000008177
GH 6+6+6x1 AISI316	3	120 x 180	252.5 x 806 x 60	148(+5/-5) x 705(+5/-5)	10.9	103813
GH 8x1 AISI316	1	120 x 240	252.5 x 410 x 60	148(+5/-5) x 305(+5/-5)	5.5	5GH0000008395
GH 8x2 AISI316	2	120 x 240	383 x 410 x 60	278(+5/-5) x 305(+5/-5)	8.2	5GH0000008124
GH 8x3 AISI316	3	120 x 240	513.5 x 410 x 60	409(+5/-5) x 305(+5/-5)	12.4	5GH0000009294
GH 8x4 AISI316	4	120 x 240	644 x 410 x 60	539(+5/-5) x 305(+5/-5)	16	5GH0000008380
GH 8x5 AISI316	5	120 x 240	774.5 x 410 x 60	670(+5/-5) x 305(+5/-5)	17	5GH0000008178
GH 8x6 AISI316	6	120 x 240	905 x 410 x 60	800(+5/-5) x 305(+5/-5)	19.4	5GH0000008381
GH 8+8x1 AISI316	2	120 x 240	252.5 x 698 x 60	148(+5/-5) x 595(+5/-5)	9.6	5GH0000011001
GH 8+8x2 AISI316	4	120 x 240	383 x 700 x 60	278(+5/-5) x 595(+5/-5)	14.8	5GH0000010879
GH 8+8x3 AISI316	6	120 x 240	513.5 x 700 x 60	409(+5/-5) x 595(+5/-5)	19.6	5GH0000010880
GH 8+8x4 AISI316	8	120 x 240	644 x 700 x 60	539(+5/-5) x 595(+5/-5)	24	5GH0000009296
GH 8+8x5 AISI316	10	120 x 240	774.5 x 700 x 60	670(+5/-5) x 595(+5/-5)	29	5GH0000009295
GH 8+8x6 AISI316	12	120 x 240	905 x 700 x 60	800(+5/-5) x 595(+5/-5)	33	115136
GH 8+8+8x1 AISI316	3	120 x 240	252.5 x 986 x 60	148(+5/-5) x 885(+5/-5)	13	109374